

# UCF Campus Master Plan 2015-25 Update

Adoption Public Hearing  
UCF Board of Trustees  
November 20, 2014



# Agenda

- Sign-in
- Welcome and Introductions
- Purpose
- Rules of Order
- Campus Master Plan 2015-25 Update Overview
- Public Comments
- Board of Trustees Master Plan Adoption



# Purpose of Public Hearing

To hear public comment and to have the Board  
of Trustees adopt the  
University of Central Florida  
Campus Master Plan 2015-25 Update



# Document Availability

- <http://www.fp.ucf.edu/mp2015/>
- By Request: [Maria.Yebra-Teimouri@ucf.edu](mailto:Maria.Yebra-Teimouri@ucf.edu)





# Comment Period

- Based on time set for reviewing agencies
- Ninety days = October 2014



# Rules of Order

- All speakers must complete a comment sheet and sign the speaker roster.
- All speakers must be signed in prior to the start of the public comment period.
- Each speaker will be given three minutes.
- When presenting, please state your name, address, and affiliation before beginning your comment.
- Oral comments will be treated the same as written comments.
- All comments and questions should be held until after the presentation.

**Please treat all participants with the respect that you would like others to show to you.**



# Master Plan Process



# Master Plan Components

- 1013.30 FS
- 10-year planning horizon
- 17 elements
- Goals, Objectives, and Policies
- Data and Analysis
- Maps



# Required Elements

- Future Land Use
- Intergovernmental Coordination
- Capital Improvements
- Recreation and Open Space
- General Infrastructure
- Housing
- Conservation
- Transportation



# Reviewing Agencies

- Orange County
- Seminole County
- City of Orlando
- City of Oviedo
- St. Johns River Water Management District
- East Central Florida Regional Planning Council
- Florida Department of Economic Opportunity
- Department of Environmental Protection
- Department of Transportation
- Department of State
- Fish and Wildlife Conservation Commission



# Campus Master Plan Schedule

- Element group effort: November 2013 - March 2014
- Open house: April 17, 2014
- First public hearing: July 15, 2014
- 90 days for agency reviews and public comments
- Second public hearing and adoption by UCF Board of Trustees: November 20, 2014
- Thirty days to file petitions and objections with the Board of Trustees

Following adoption: Campus Development Agreement negotiation with Orange County



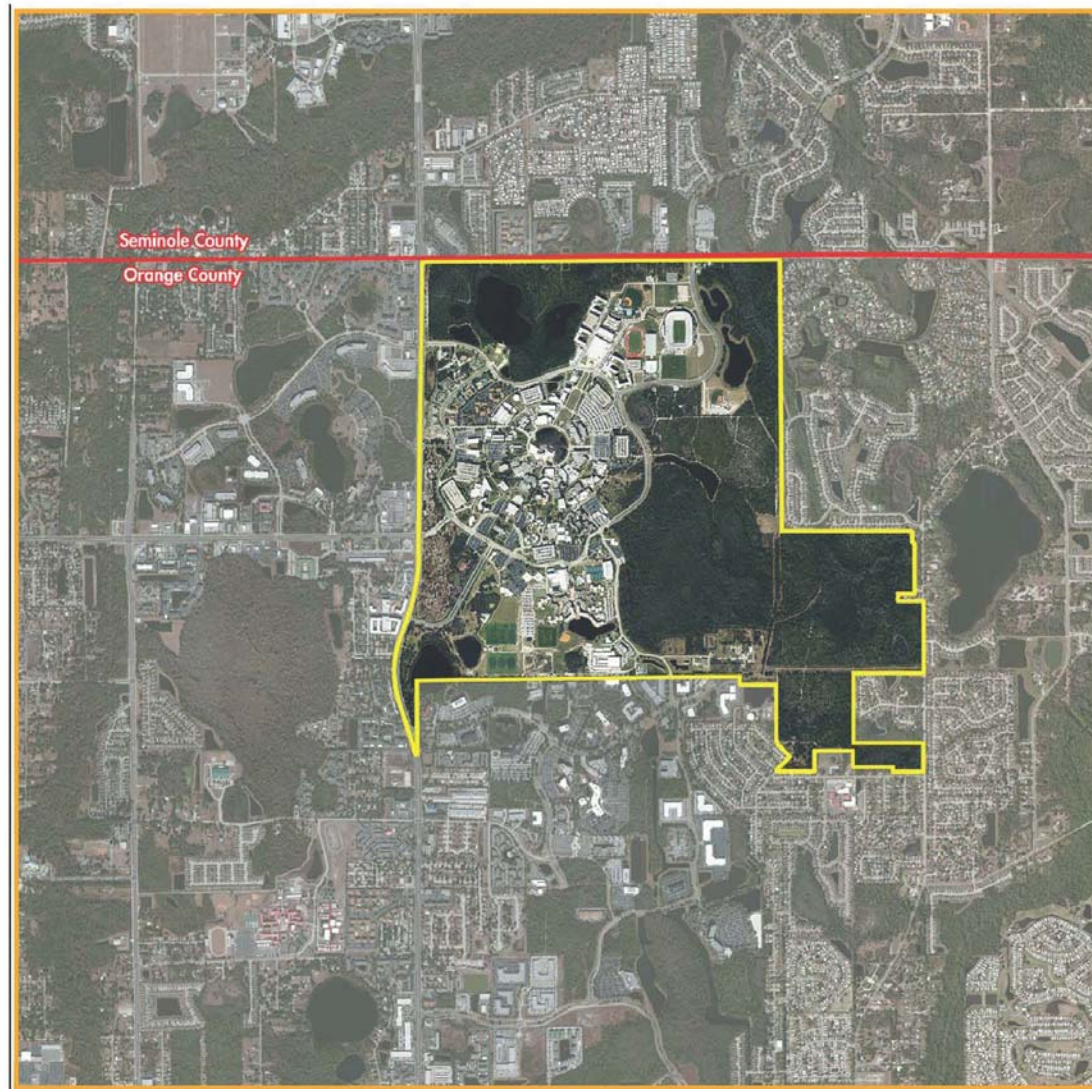


Figure 2.11-1  
Context Area Map

Comprehensive Master Plan Update  
University of Central Florida  
Orlando, Florida  
2015-2025

6  
N

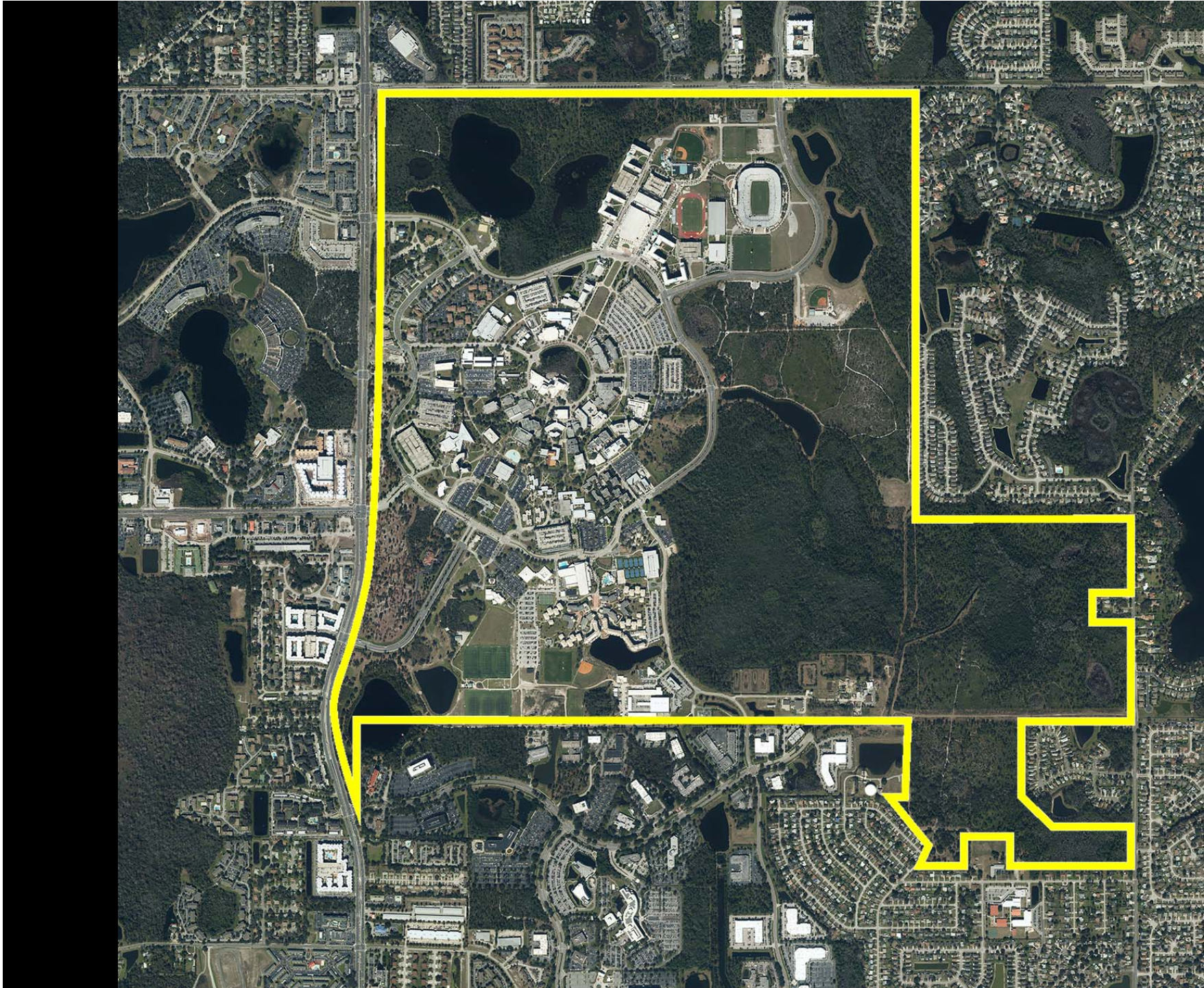
All maps are diagrammatic and conceptual. The various areas shown are approximate and not to survey accuracy. The intent of these maps is to illustrate general areas of existing or potential use.

Rev: 2014-08-05

Legend  
Study Area  
County Boundary  
UCF Campus Boundary

0 2,600 5,200 10,400  
Feet



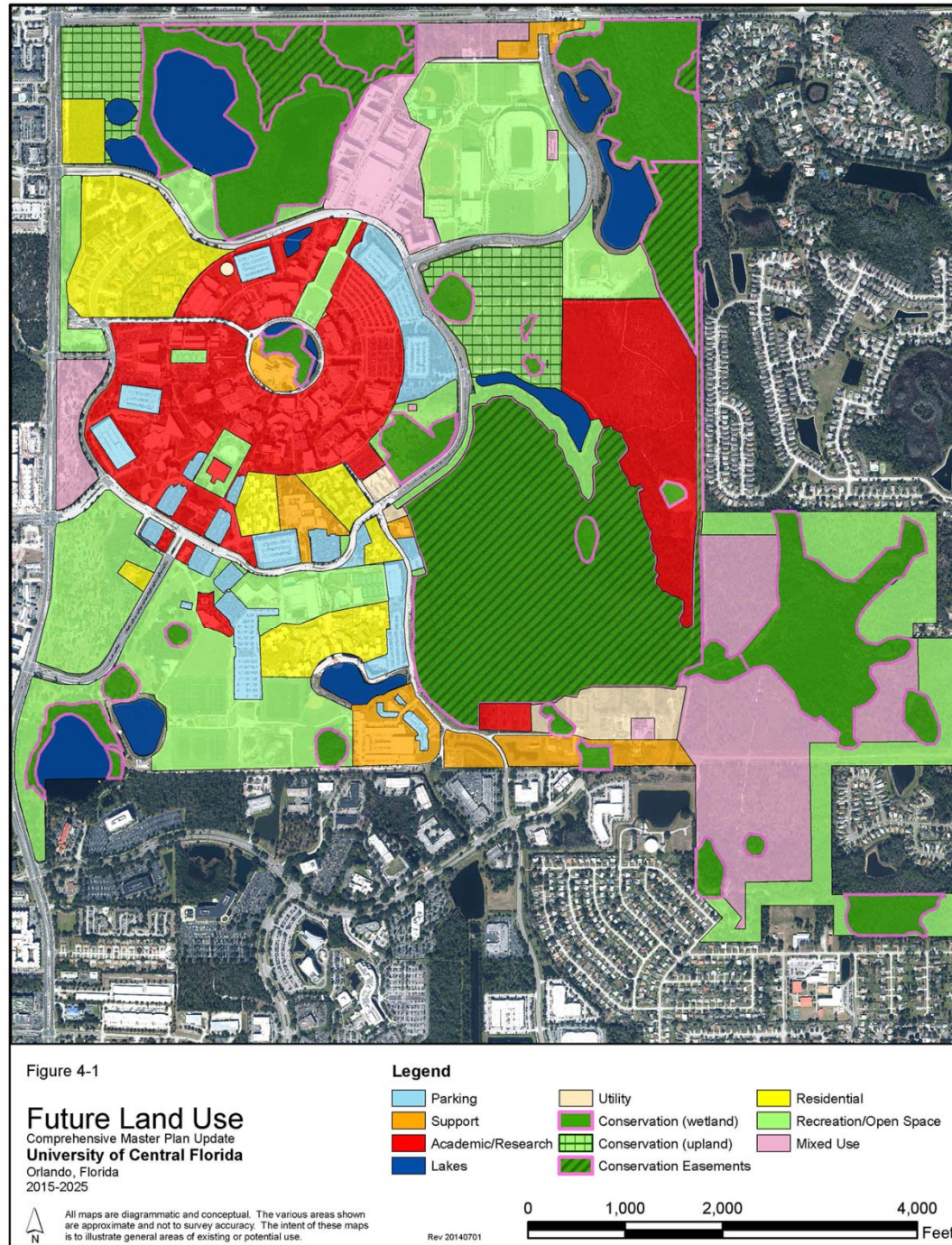




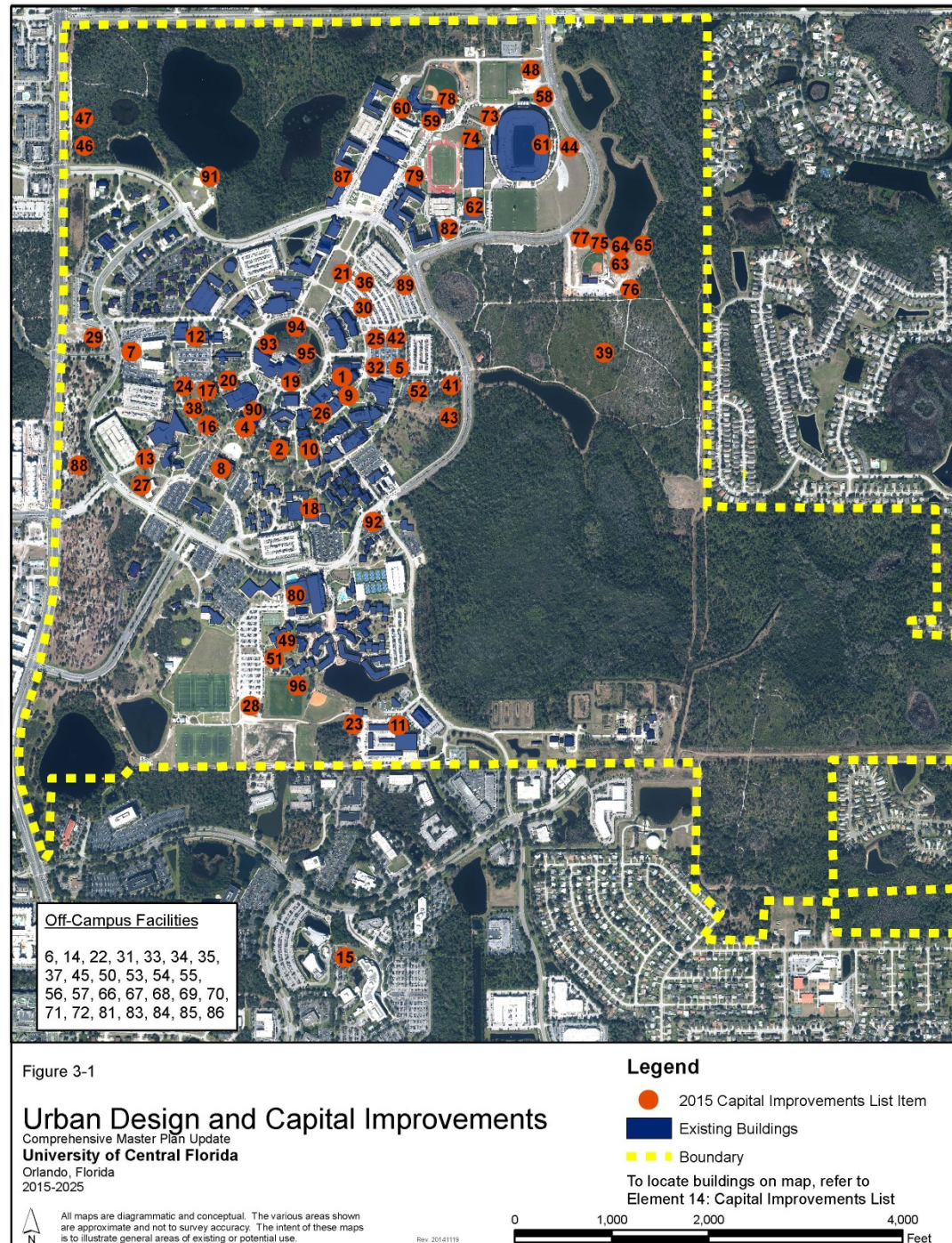
# Map Overview

- Future Land Use
- Urban Design and Capital Improvements
- Recreation and Open Space
- General Infrastructure (Stormwater)
- Housing
- Conservation
- Transportation











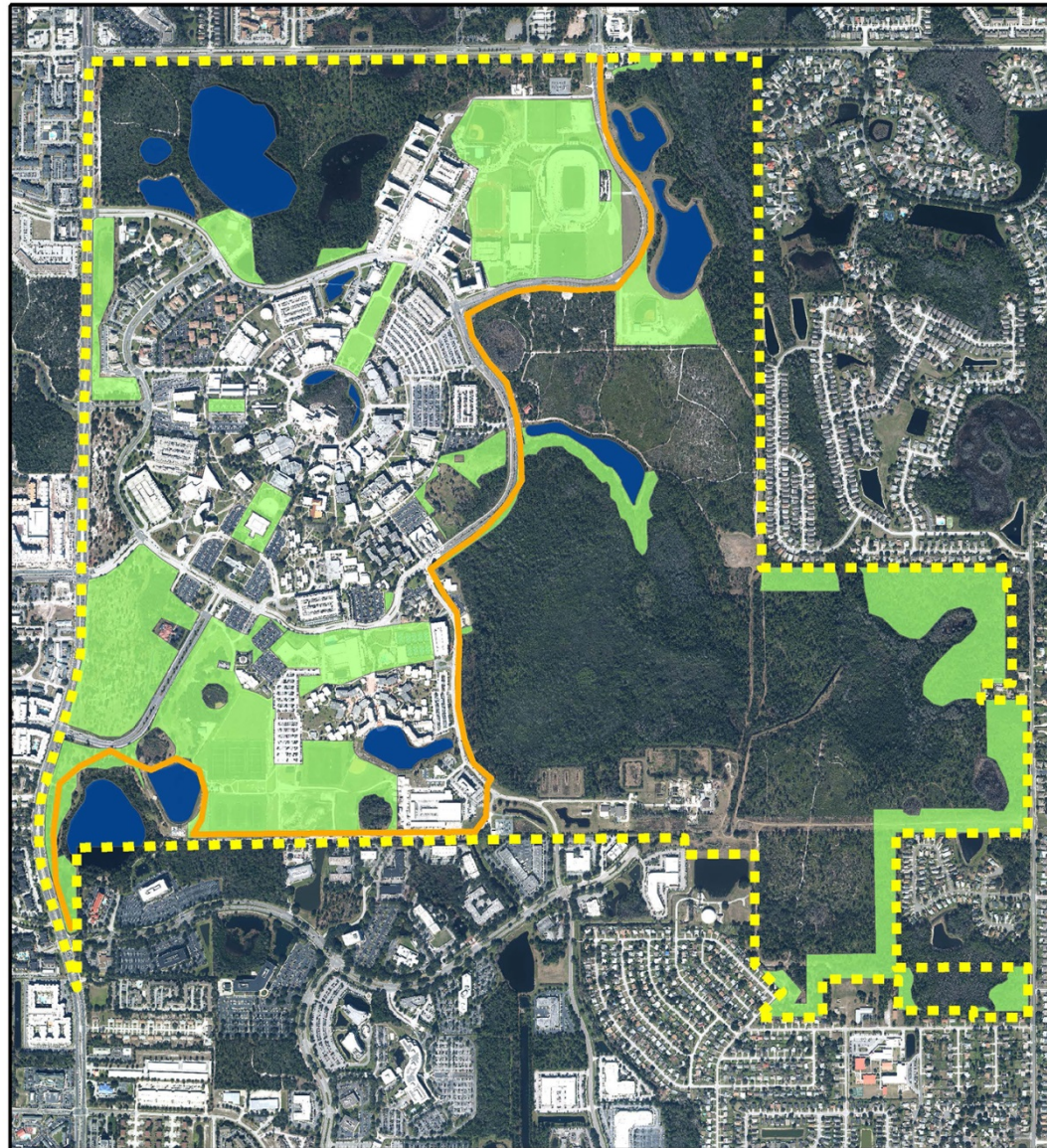


Figure 8-1

## Recreation and Open Space

Comprehensive Master Plan Update  
**University of Central Florida**  
 Orlando, Florida  
 2015-2025



All maps are diagrammatic and conceptual. The various areas shown are approximate and not to survey accuracy. The intent of these maps is to illustrate general areas of existing or potential use.

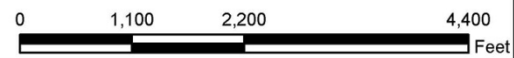
### Legend

Boundary

Proposed Little Econ Greenway Trail

Recreation and Open Space

Lakes and Ponds



Rev 20140709



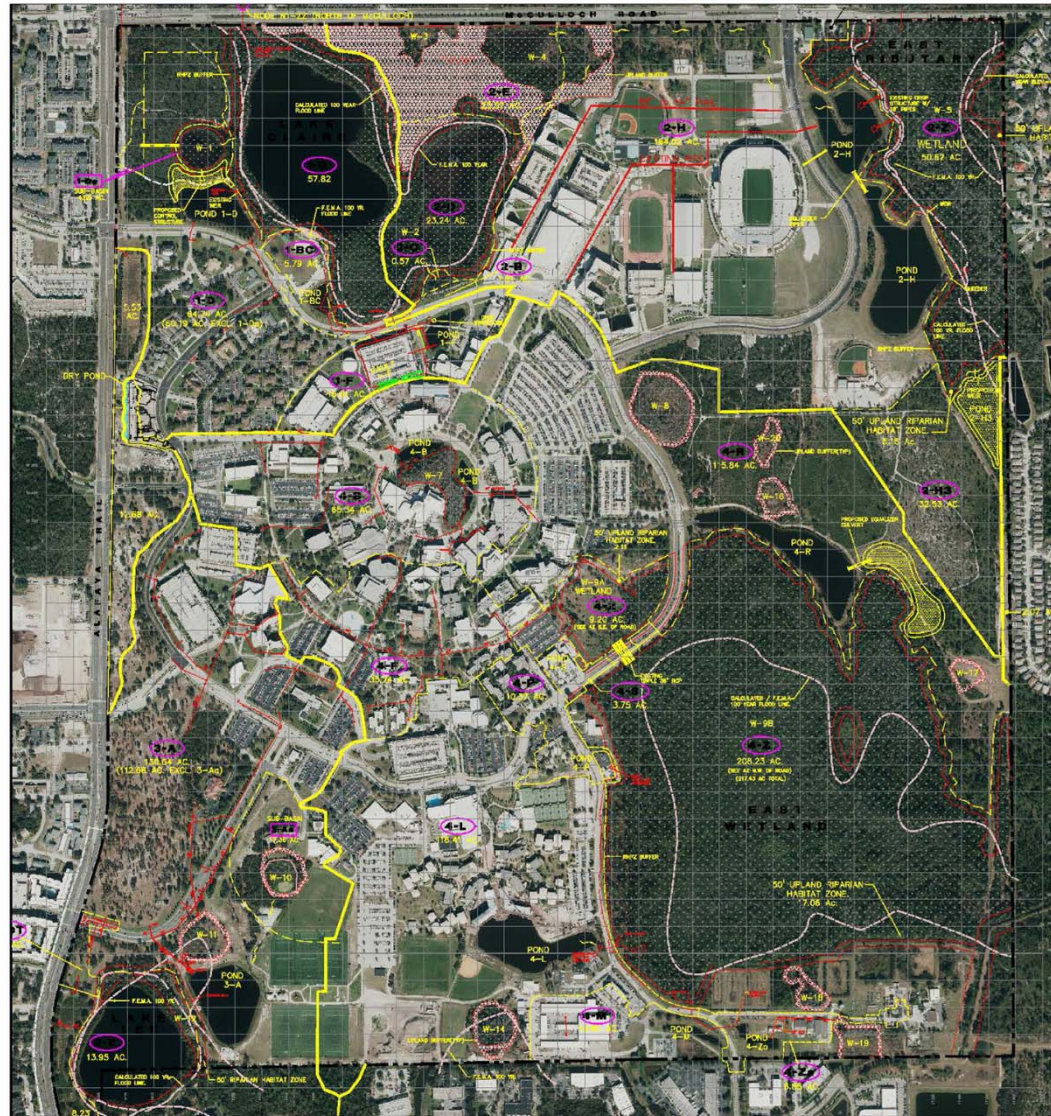


Figure 9-1

# **Stormwater Facilities** Comprehensive Master Plan Update **University of Central Florida** Orlando, Florida 2015-2025

## **LEGEND:**

- BOUNDARY LINE
- DRAINAGE DIVIDES
- DRAINAGE BASIN DIVIDES
- DRAINAGE SUB-BASIN DIVIDES
- SUB-BASIN IDENTIFICATION/AREA
- BASIN IDENTIFICATION/AREA
- DIRECTION OF SURFACE FLOW
- PROPOSED POND LOCATIONS
- EXIST. STORMWATER STRUCTURES/CULVERTS
- PROP. STORMWATER STRUCTURES/CULVERTS
- F.E.M.A. 100 YR. FLOOD LINE
- CALCULATED 100 YR. FLOOD LINE



All maps are diagrammatic and conceptual. The various areas shown are approximate and not to survey accuracy. The intent of these maps is to illustrate general areas of existing or potential use.

Rev 20120810



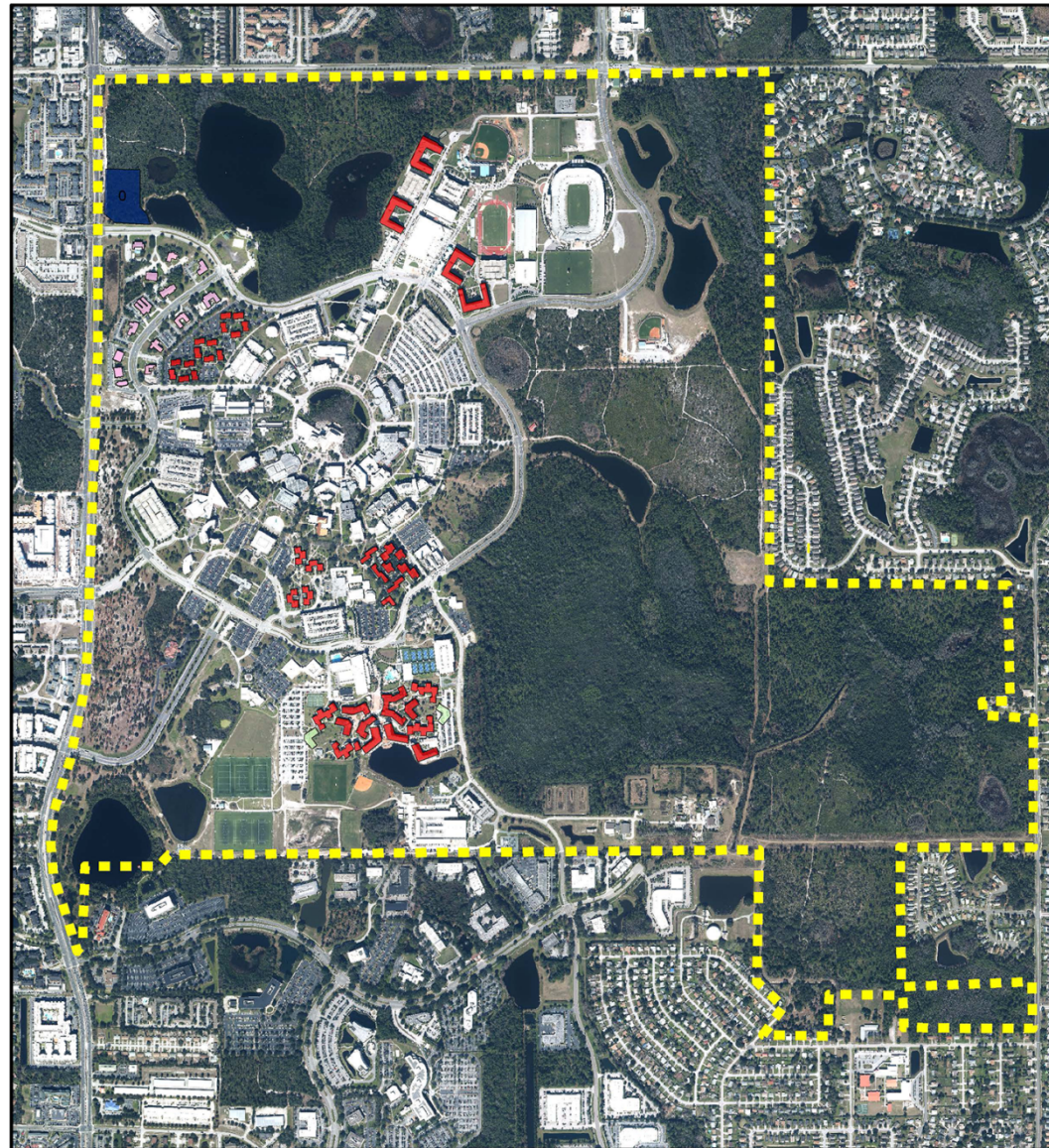


Figure 7-1

## Existing and Planned Housing

Comprehensive Master Plan Update  
**University of Central Florida**  
 Orlando, Florida  
 2015-2025

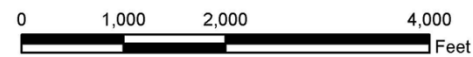


All maps are diagrammatic and conceptual. The various areas shown are approximate and not to survey accuracy. The intent of these maps is to illustrate general areas of existing or potential use.

Rev 20140617

### Legend

- Boundary
- Existing Campus Housing
- Academic Village Expansion
- Existing Greek Park Housing
- Special Interest Housing





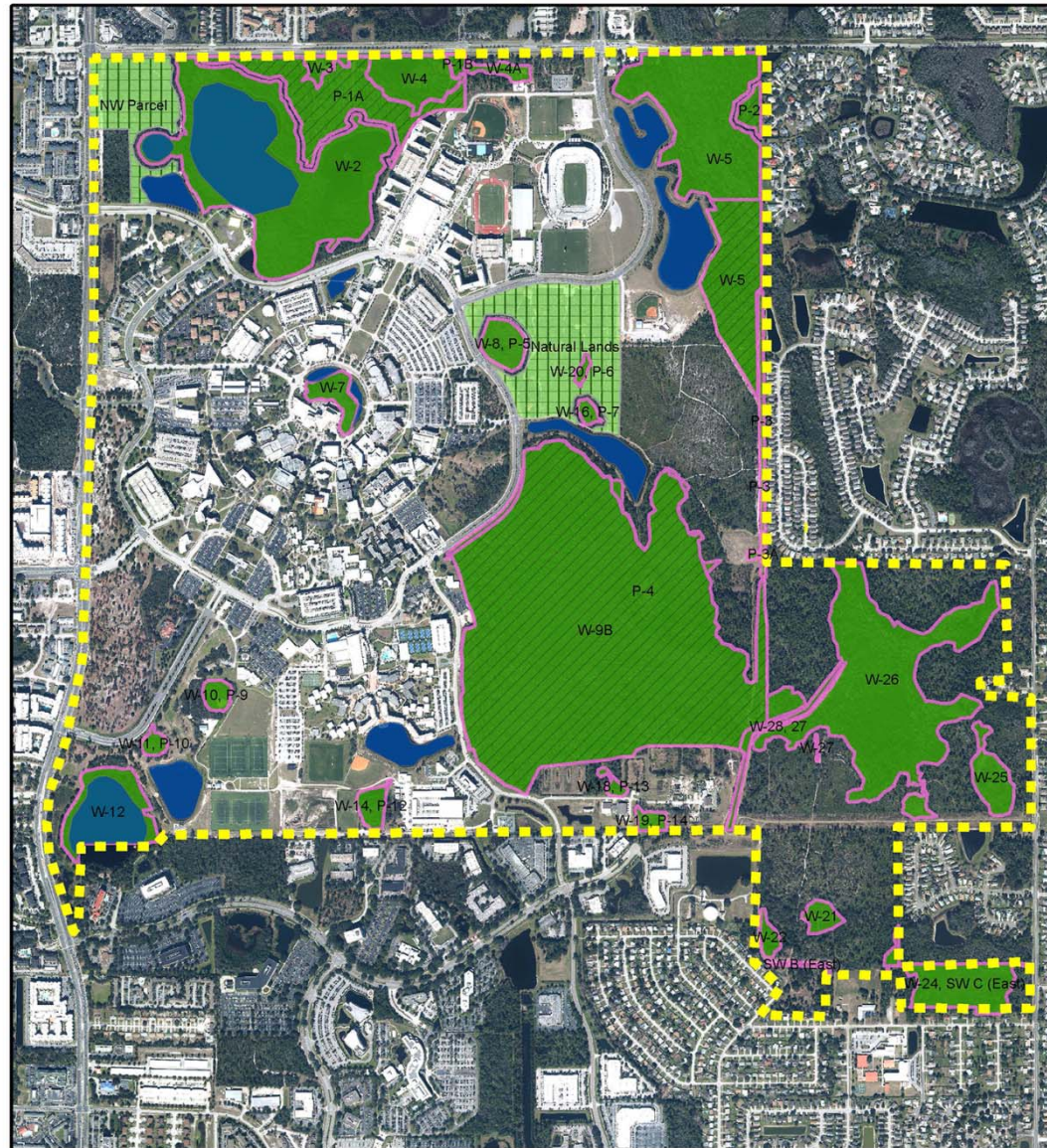


Figure 13-1

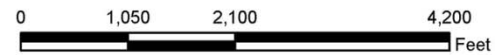
**Conservation**  
Comprehensive Master Plan Update  
**University of Central Florida**  
Orlando, Florida  
2015-2025



All maps are diagrammatic and conceptual. The various areas shown are approximate and not to survey accuracy. The intent of these maps is to illustrate general areas of existing or potential use.

**Legend**

- Conservation (upland)
- Conservation (Wetland)
- Lakes & Ponds
- Boundary
- Conservation Easement



Rev. 20140710



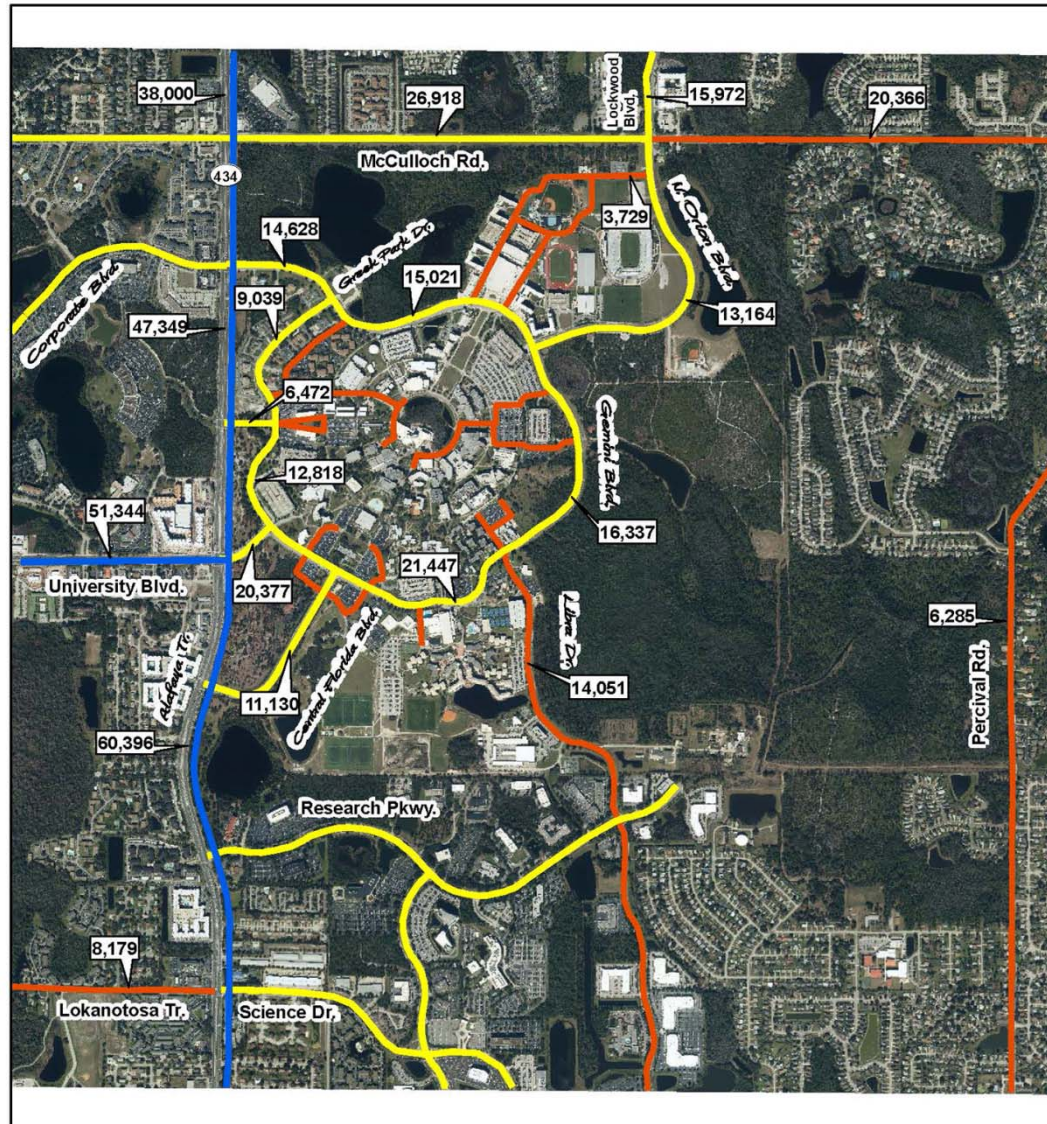


Figure 2.11-6

## Existing Roadway Network and Daily Traffic Volumes

Comprehensive Master Plan Update  
University of Central Florida  
Orlando, Florida  
2015-2025

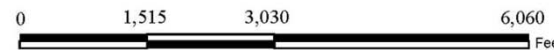


All maps are diagrammatic and conceptual. The various areas shown are approximate and not to survey accuracy. The intent of these maps is to illustrate general areas of existing or potential use.

Rev. 20140414

### Legend

- 6-Lane Roadway
- 4-Lane Roadway
- 2-Lane Roadway
- 11,111 Average Daily Traffic



# Summary of Changes

- Revised 10-year Capital Improvements Plan
- Updated enrollment projections
- Revised general formatting and language
- Working with Orange County to create a new Campus Development Agreement



# Summary of Agency Comments

Agency	Comment	Response
Department of State	Clarified that 50 years is the age at which buildings are considered historically significant and asked us to make note of this in the Architectural Design Guidelines Element	Agreed
Florida Department of Economic Opportunity	Reviewed the draft Master Plan but did not identify any comments	Acknowledged and thanked them for their review
City of Oviedo	No comments received	
City of Orlando	No comments received	



# Summary of Agency Comments

Agency	Comment	Response
Orange County Planning Division	<ul style="list-style-type: none"> <li>• Requested we add mention of the Memorandum of Understanding between Orange County and UCF dated August 3, 2010</li> <li>• Requested we link the Capital Improvements List</li> <li>• Suggested we prepare students for neighborhood living</li> <li>• Applauded innovative Travel Demand Strategies</li> <li>• Expressed concerns about potable water capacity through 2025</li> <li>• Questioned how many additional parking spaces will be provided by 2025</li> </ul>	<ul style="list-style-type: none"> <li>• Agreed</li> <li>• Agreed</li> <li>• Agreed</li> <li>• Will continue to explore expanding participation</li> <li>• No additional capacity anticipated</li> <li>• Addressed in the document</li> </ul>



# Summary of Agency Comments

Agency	Comment	Response
East Central Florida Regional Planning Council	No comments received	
Florida Department of Environmental Protection	Found no provision that, if adopted, would result in adverse impacts to state resources	Acknowledged
Florida Department of Transportation	No comments received	



# Summary of Agency Comments

Agency	Comment	Response
Seminole County	<ul style="list-style-type: none"><li>• Requested we revise the Future Land Use Element, Data and Analysis section 2.4 (DA)-3, to differentiate existing future land use from existing current land use. Asked that we remove two current land uses and add three future land uses to reflect the latest Seminole County Comprehensive Plan</li><li>• Requested we remove the word “Zoning” from this same section of the FLU element</li></ul>	<ul style="list-style-type: none"><li>• Agreed</li><li>• Agreed</li></ul>



# Summary of Agency Comments

Agency	Comment	Response
Florida Fish and Wildlife Conservation Commission	<ul style="list-style-type: none"> <li>• Requested we reword Conservation Element Policy 1.2.7 to reflect seeking consultation with them instead of following an out of date FFWCC guideline</li> <li>• Requested we revise Policy 1.2.6 and change a reference to endangered species in Chapter 39, FAC that was rescinded and replace with the new rule in Chapter 68, FAC</li> </ul>	<ul style="list-style-type: none"> <li>• Agreed</li> <li>• Agreed</li> </ul>

# Summary of Agency Comments

Agency	Comment	Response
St. Johns River Water Management District	<ul style="list-style-type: none"><li>• Requested we revise Policy 1.4.5</li><li>• Requested University obtain District approval prior to conducting prescribed fire within a conservation easement</li></ul>	<ul style="list-style-type: none"><li>• Agreed</li><li>• Agreed</li></ul>
Seminole County Sherriff's Office	<ul style="list-style-type: none"><li>• Recommended we include a "Public Safety Element" in the Master Plan to address changes in student population, additions to student housing, and major infrastructure</li></ul>	<ul style="list-style-type: none"><li>• Stipulated by Florida Statute 1013.30, which specifies the element structure of campus master plans</li><li>• Addressed within the current elements</li></ul>



# Summary of Public Comments

We received three comments during the First Public Hearing.

- A nearby resident asked how the reviewing agencies would collaborate on their comments regarding the master plan. The resident also asked about the jurisdictional limit of the UCF Police Department.
- A University Estates resident questioned any planned expansion of the Bright House Networks Stadium.
- A second University Estates resident asked about how many students will be visiting, attending classes, or living on the main campus through 2025.

# Summary of Public Comments

- A resident made a suggestion to extend the eastern terminus of Research Parkway by 1.25 miles to Tanner Road in order to improve access to campus for residents residing east of the university.



# Public Comments

- Comment card
- Comment time limit



# Recommendation and Action

- Recommend adoption of Campus Master Plan 2015-25 Update



# UCF Campus Master Plan 2015-25 Update

Adoption Public Hearing  
UCF Board of Trustees  
November 20, 2014

